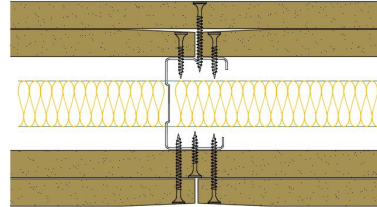


50-K-58(25) - SPEEDLINE System Data Sheet - Version V1 (24-10-23)

SPEEDLINE 50mm 'C' Stud Partition @600mm Ctrs,
with 2x Knauf 15mm Wallboard each side, 25mm
APR



System Performance Breakdown

Fire Resistance:

BS476 Part 22:1987:

Test Ref & Date or Applied Ref & Report:

Max Height:

Thickness:

Duty Grade: BS 5234: Part 2:1992:

Sound Insulation:

60/60 Minutes (Integrity/Insulation).

BRE 208596 - BRE Report P102396-1011B

Refer to Speedline Specification Clause

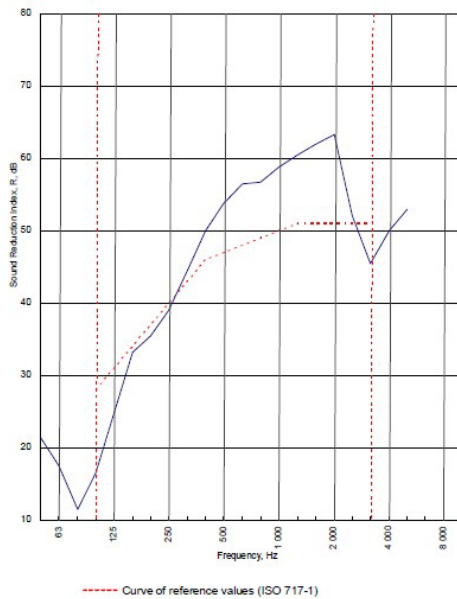
112 mm. (At Base Track, Excluding Finishes)

Severe - Annexes A-F

47 R_wdB, Date Tested or Assessed Against - 50-K-57(25)

Test Code:
H17386BA
Test Date:
15/06/2011


Freq. Hz	R dB
50	21.3
63	17.5
80	11.4
100	16.4
125	24.6
160	33.2
200	35.4
250	39.0
315	44.6
400	50.0
500	53.8
630	56.5
800	56.7
1 000	58.8
1 250	60.5
1 600	62.0
2 000	63.3
2 500	52.1
3 150	45.5
4 000	50.0
5 000	53.0
6 300	
8 000	
10 000	





Rating according to BS EN ISO 717-1:1997
R_w (C;Ctr) = 47 (-4;-12) dB
 Max dev. 11.6 dB at 100 Hz


C ₅₀₋₁₅₀ = -7 dB	C ₅₀₋₅₀₀ = -6 dB	C ₁₀₀₋₅₀₀ = -3 dB
C ₁₂₅₋₁₅₀ = -17 dB	C ₁₂₅₋₅₀₀ = -17 dB	C ₁₂₅₋₁₀₀₀ = -12 dB

TESTED AT ONE OF THE UKAS ACCREDITED LABORATORIES BELOW

B.T.C (H-Ref on Graph) 

B.R.E 

AIRO 

S.R.L 

Customer: Metsec plc Hepsec Division

BTC 17406A: Page 9 of 11

